

Tidworth Area Board Police Report January 2018

1. East Community Policing Team

Sector Head: A/Insp James Williams

Sector Deputy:

Community Coordinator: Pc Lucy Wileman

Tidworth PCSO: PCSO Maria Downham

A Christmas Message from Wiltshire Police Chief Constable Mike Veale:

"2017 has been a difficult year for policing across the UK for so many reasons. We have seen horrific acts of terrorism but we have also seen the most heroic acts of courage, bravery and fortitude. These tragic events bring into sharp focus the magnificent work of our emergency services, their selflessness, dedication and kindness is simply breath-taking.

"As demand increases and our resources reduce you have remained steadfast, resilient and motivated. Whilst there have been many challenges both locally and nationally I am immensely proud of what Wiltshire Police stand for. Despite the challenges, pressure, scrutiny and, on occasions, the danger you face, there is still a great buzz of positivity which is palpable when I visit different departments and go on the frontline.

"I have been struck this year by not only the amount of feedback and correspondence I have received about the service my staff provide but also the words that constantly resonate when they describe their actions: compassionate, caring, professional, brave, empathetic, sympathetic, inspiring, unbelievable, unforgettable, patient, meticulous, persistent, dedicated, kind, thoughtful, fearless and selfless.

"I recently had the pleasure of hosting our force awards ceremony which honoured just some of the outstanding work, dedication and bravery of officers, staff and the public. It was a very special event which highlighted once again that policing is not 'just a job' it is very much a vocation. Sometimes it is a very dangerous vocation which sadly results in injury, both emotional and physical. To all those people who have lost their lives in the course of their duty and to all those people who are no longer with us, who dedicated their lives to policing, I salute you.

"As we know, police work is hard and with decreasing budgets and fewer officers and staff, it is fair to say that these challenges and demands will continue. This puts more pressure on my staff, particularly their health and wellbeing which continues to be my top priority. It is obvious that if I don't do all that I am able to look after them then I will be letting them down and that is something I am not prepared to do. By looking after my staff, they will be better placed to look after our communities which is a huge honour and privilege.

"The festive period is a time for joy, celebration and reflection. It is also a time when we experience peak demand which can test our services to the limits. I know that everyone on duty will continue to uphold the finest traditions of Wiltshire Police. Many of my staff will miss out on Christmas at home with their families which I know is really difficult. I also know that throughout the year they will have missed key moments and events. So let's spare a thought for all our brilliant people working over the festive period and especially their families.

"To the amazing team of people we have at Wiltshire Police including all our Special Constables and volunteers I would like to say thank you, you make a real difference.

"To all our communities, have a very happy and safe Christmas."

Please follow us on:

Twitter <https://twitter.com/wiltshirepolice>

Facebook <https://www.facebook.com/wiltshirepolice/>

Or sign up to Community Messaging <https://www.wiltsmessaging.co.uk/> Our free Community Messaging service will also help keep you updated about policing and crime in your local area.



2. CPT - Current Priorities & Consultation Opportunities:

Current Priorities Tidworth and surrounding areas.

Patrols of Farms situated in The Chutes

It became clear from speaking to a farmer on 18th Sept and looking at recent reports around this date that the farms situated in The Chutes were starting to be targeted. It was decided to commence a New NTG Priority on this date, we appreciated that the NTG meeting was set for 26th Sept and usually such a decision is discussed at this meeting however felt that we needed to commence this as soon as possible and update the group at the NTG. This would also not affect any additional topics that would be raised.

So on 19th Sept the Priority commenced, at this time the following farms will be patrolled in line with recent information and issues raised. New Zealand Farm, Gammons Farm, Chrystal Palace Farm & Deans Farm. In total 8 patrols/actions have taken place. Depending on information received the locations will be reviewed. To date 43 patrols/actions have taken place.

Theft from Motor Vehicles

This new priority for the whole patch has been agreed prior to the up and coming NTG Meetings for Amesbury/Durrington/Tidworth/Ludgershall

Following a slight increase in Vehicles offences, it has been decided that this needs to be in place. In particular work vans are being broken into with an unknown device. According to some local companies this is happening all of the South West. Some analytical work has commenced. Pc Wileman and the PCSO's will commence crime prevention work shortly. Numbers are low locally at the moment and we wish to keep it this way.

The beauty spot signs which Area Board funded have now arrived, Pc Wileman is now co-ordinating the signs being put up at the areas which were targeted earlier this year.

Target Patrols Tidworth and surrounding areas

Co-Op – Ludgershall

Due to a series of thefts a reassurance patrol commenced at the store on 17th October, the patrols continued until 8th November. We are pleased to say there were no reported incidents during this time and 23 patrols were actioned.

Saddle Club

A burglary took place at the Saddle Club on 22nd November, in light of this a target patrol commenced. In total 17 patrols took place and no further incidents were reported. The patrol closed down on 8th December.

Minden Way & Soper Crescent

A report was raised by RMP on 21st November of suspicious activity taking place in **Minden Way**. A resident had reported that her door handle was being tried during the hours of darkness. A patrol commenced and a week later similar activities were reported in Soper Crescent, the patrols remained open until 11th December. In total 32 patrols were actioned.

Op Eskimo

Op Eskimo was launched on the 8th December. The aim of this was to mount a visible uniformed operation, supported by plain clothes officers in local town centres prior to Christmas Day by working at certain times and targeting identified stores which have a high shoplifting rate. By working in conjunction with partner agencies in the town in order to try and identify known and potential offenders and to dissuade them from committing offences.

To allow for a patrol strategy and implementation to disrupt and deal with criminality namely shoplifting and purse dips.

Patrol to be in place from today until 24th December. In total 21 patrols took place. Purse chains and crime prevention leaflets were handed out.

Arnott Close

We received an initial complaint regarding Anti social behaviour from one resident . On 24th November we commenced a target patrol to offer reassurance . In order to obtain any further intelligence anti social behaviour surveys were handed out to 40 residents, only a few were returned and the patrol closed down on 4th December due to no further reports.. In total 18 patrols were actioned.

Chrystal Palace and New Zealand Farm

Further patrols of Chrystal Palace and New Zealand Farm, Upper Chute were set up on the 18th December due to two thefts in one week. This makes a total of 8 thefts from this farm in 6 months. To date 10 patrols/ Actions have taken place.

Aughton Farm and Parsonage Farm

Patrols of Aughton Farm and Parsonage Farm were set up on the 19th December due to several reports of Hare Coursing across the farms

Drugs

Warrant executed in Ludgershall on 30th November 2017, small amount of Cannabis seized.

Neighbourhood Tasking Meeting

The next meeting is due to take place on 5th January 2018 at 14.30 hours at the Tidworth Police Station.

Media

Maria has agreed to do a regular slot on Castledown Radio with Brian Pratt and Marc Read.

Consultations

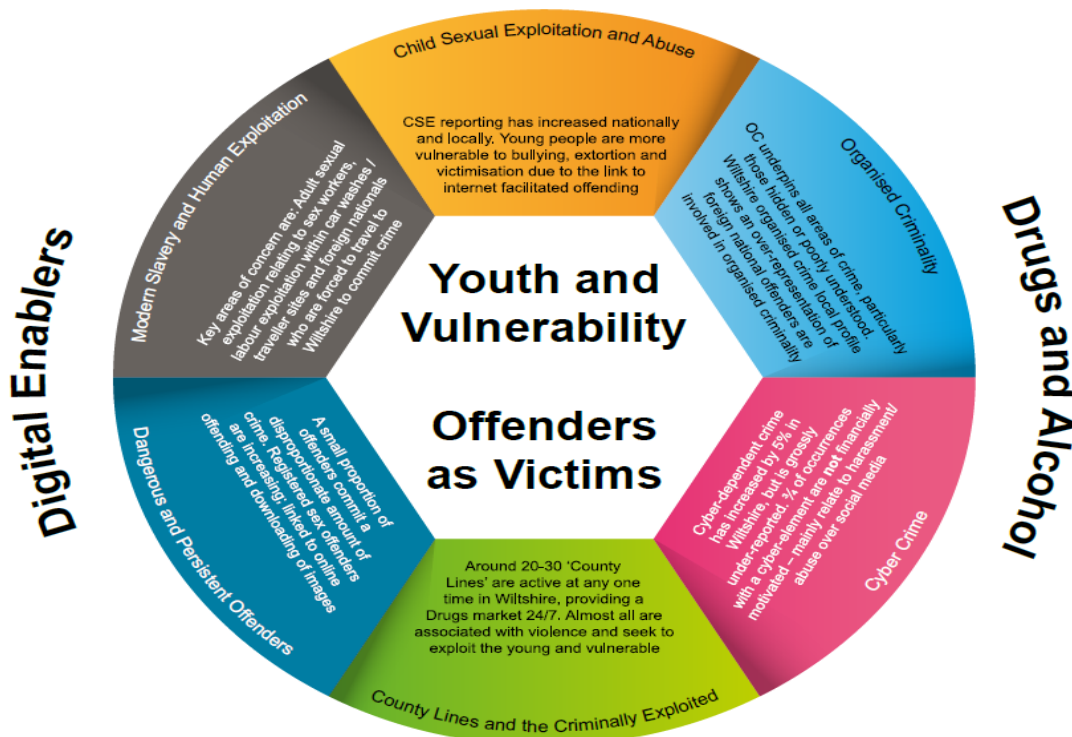
You PCSO's are carrying out consultations on their areas.

Update re Rural Crime Partnership

Rural crime operations continue, in our efforts to target what is often cross border organised criminal activity.

3. Wiltshire Police Control strategy

Below is our Control Strategy for your reference. This focuses on how we conduct our operational policing based on the Police and Crime Plan. We will continue to align our resources with the threat/harm/risks presented in line with the control strategy.



Child sexual exploitation and abuse

Young people often enter the criminal justice system as a direct result of being exploited by others for financial or sexual gain. This has been recognised recently with a shift in focus to these young people being dealt with as Criminally Exploited and Vulnerable (CEV) individuals. Where circumstances dictate, this will mean that the safeguarding of these young people will take precedence over any criminal offences they may have committed. Those doing the exploiting are the individuals that should be targeted.

Please be vigilant for young people who may be being exploited in this way and report to Police through the normal channels.

Organised criminality

Operation Sirius is a dedicated response team investigating Asian Gold burglaries, one of which recently occurred within this area. Our local officers have also been engaging with businesses in the town requesting they report anything or anyone acting suspiciously in their neighbourhood, unknown or unexpected doorstep traders, unusual vehicles, many offenders use high performance vehicles. Please be mindful if you see such a vehicle driving around your area. We work closely with forces nationally, sharing information, helping to tackle this criminality which occurs throughout the country.

Cybercrime

Our Cyber Crime Prevention Officer is working closely with our partners within the region including attending Area Boards.

Many of the cyber scams which succeed occur following an individual's response to act quickly to an instruction or use distraction techniques so that less concentration occurs on the task in hand.

County Lines and the Criminality Exploited

A total of 20 drug dealers from Salisbury have this week been sentenced following an operation targeting class A drug supply in the city.

The following all pleaded guilty to class A drug supply offences in the summer. They were all remanded in custody and sentenced as follows:

- Christian Quadjovie, age 18, of Barge Walk, Greenwich, sentenced to two-and-a-half years imprisonment
- Tomisin Ifelowa, age 19, of Williamson Close, Greenwich, sentenced to two-and-a-half years imprisonment
- Shavase Lemar-Taylor, age 27, of Propeller Crescent, Croydon, sentenced to 15 months imprisonment suspended for 12 months
- Pellumb Buci, age 18, of Villas Road, London, sentenced to three years imprisonment
- Jennifer Cooper, age 34, of no fixed abode, Bulford, sentenced to two years imprisonment suspended for two years
- Ollie Piper, age 25, of Barnard Street, Salisbury, sentenced to two years imprisonment suspended for two years
- Joshua Jackson, age 18, of Pitfield Crescent, London, sentenced to 15 months imprisonment

The below, who were not in custody, pleaded guilty to class A drug supply offences and were sentenced today and yesterday as below:

- Brendan Cooper, age 39, of no fixed abode, Salisbury, sentenced to three years and four months imprisonment and subject to a five year criminal behaviour order
- Justin Ling, aged 46, of Barnard Street, Salisbury, sentenced to two years imprisonment suspended for two years
- Wayne Dix, aged 37, of Barnard Street, Salisbury, sentenced to 12 months imprisonment suspended for 12 months
- Dean Cochrane, 36, of Rolleston Street, Salisbury, sentenced to two-and-a-half years imprisonment
- Timmy Thomas, aged 51, of Bishopdown Road, Salisbury, sentenced to 12 months suspended for 12 months
- Tracey Robertson, aged 41, of Cherry Close, Salisbury, was sentenced to 18 months imprisonment suspended for two years
- Daniel Domanski, aged 30, of Carmelite Way, Salisbury, was sentenced to 18 months imprisonment suspended for two years
- Helen Hughes, aged 41, of Elm Grove Road, Salisbury, sentenced to two years imprisonment suspended for two years
- Mark Ledson aged 43, of Southampton Road, Salisbury, sentenced to three years and four months imprisonment

- Stephen Maidment, aged 52, of Lovatt Green, Salisbury, will be sentenced at a date to be fixed.

- A warrant has been issued for Shaun Green, aged 35, of Drake Close, Bishopdown, and Jacqui Crotty, age 41, of Netherhampton Road, Salisbury, who both failed to appear in court.

At previous hearings, the following were also sentenced as part of the operation:

- Maxi Andrews, aged 23, of Duke Street, Nottingham, pleaded guilty to conspiring to supply class A drugs (heroin) and was sentenced to 40 months imprisonment
- Darren Davis, aged 22, of Highbury Road, Nottingham, pleaded guilty to conspiring to supply class A drugs (heroin and crack cocaine) and was sentenced to four years imprisonment
- Jason Dowding, aged 29, of St Albans Road, Nottingham, pleaded guilty to possession with intent to supply class A drugs (heroin) and was sentenced to 24 months suspended for two years
- Michael Hughes, aged 31, of Odstock Road, Salisbury, pleaded guilty to supply class A drugs (heroin) and was jailed for 40 months.

On July 12 and 13, a series of early morning raids were carried out across the city. More than 100 officers were involved in the intelligence-led operation making it one of the biggest of its kind to be undertaken by Wiltshire Police.

The carefully-planned op identified issues around County Lines.

County Lines are a national and regional issue - it refers to a group or gang, usually based in cities, who establish the supply of Class A drugs into smaller towns. Gang violence and exploitation is often linked to County Lines supply and there is a significant risk of emotional and physical harm to those they exploit or those who are indebted to them. Young and vulnerable people are often coerced into running or selling the drugs.

Some vulnerable people living in housing association and council accommodation are deliberately targeted and lose control of their homes to the dealers/suppliers through intimidation and fear. The dealers from out of town will then use the property as a base - this is known as 'Cuckooing'.

Detective Inspector Paul Franklin said: "A huge amount of intelligence gathering was carried out in the months prior to this operation to ensure we were able to submit files to the CPS and charge the offenders immediately.

“The aim of the operation was to target the supply of class A drugs coming in to the city, and by taking out so many dealers in just two days we were able to disrupt and dismantle a number of chains of supply. A number of these people were from out of town, and had come to the city to exploit some of our most vulnerable drug users. By carrying out these raids, we were able to remove these people from our streets, and provide support to the most vulnerable members of our society.

“During the raids, we found a number of vulnerable people who were being cuckooed. They were being kept in their homes and had been threatened with violence if they went to police.

“We recognised that this number of arrests would effectively leave a gap in the market for drug users and addicts and in the weeks that followed, we worked closely with Turning Point, Wiltshire Council and Motiv8 to ensure help and support was provided to those in need. This was an example of some really effective partnership working and I know Turning Point saw a rise in the number of referrals during this time.

“I am satisfied with the sentences handed out to these dealers. County lines are sophisticated drug networks and bring highly addictive substances into our community. One of our priorities is targeting the violence and potential exploitation these dealers bring with them. I want to make it clear that Wiltshire may be a rural county, but we are not a soft touch and drug dealers who believe they can come to our county to deal drugs under the police radar are mistaken. We remain dedicated to targeting dangerous drug networks and county lines, and the threat, harm and risk they pose to our communities, and we are continuing to regularly put offenders behind bars as a result of the hard work of our dedicated crime teams.”

Assistant Chief Constable Kier Pritchard added: “This operation was a significant undertaking by officers from all over the force - a huge amount of planning, organising and intelligence gathering was required to ensure the two days of raids were a success. I am really pleased that we have been able to put 10 dealers behind bars, preventing them from exploiting our vulnerable members of society.

“I’d like to continue to stress the important role members of the public have in helping us tackle class A drug supply. Over recent weeks we have been raising awareness of the tell-tale signs of drug dealing and cuckooing - if you suspect any drug activity taking place in your neighbourhood, please call police on 101.”

Salisbury Sector Inspector Pete Sparrow said officers will continue to tackle class A drug supply in the area despite the court result.

“Although this investigation has focused on Salisbury, the tendrils of associated crime has impacted upon a much wider vulnerable society,” he said.

“We continue to do all that we can to protect our vulnerable sector and make it as difficult as possible to prevent these County Line Drug Networks from establishing any stable base in the future. Although the sentencing sends a very positive message, it is important that we continue to remain proactive in any action taken.”

Hayley Porter-Straw, District Crown Prosecutor for the Crown Prosecution Service Wessex said: “As a result of the thorough investigation by Wiltshire Police, the Crown Prosecution Service was able to put a strong case before the court, resulting in a number of guilty pleas. CPS Wessex and Wiltshire Police are strongly committed to tackling vigorously those involved in the supply of drugs. This prosecution demonstrates how our close collaboration has resulted in these successful prosecutions.”

Dangerous and Persistent offenders

Work is continuing with our SWITCH nominals, (those who are identified as persistent and prolific offenders), including intelligence gathering and relevant actions following dissemination. We currently have two nominals within the East Policing Area classified as such and we work closely with our SWITCH team members and partner agencies to manage these offenders.

Modern Slavery and Human Exploitation

Wiltshire Police and PCC response to HMICFRS Modern Slavery report 24 October

Detective Superintendent Craig Holden said: "Today's report serves as an important reminder that police forces must take a robust approach to modern slavery and human trafficking - this is a complex area of modern day policing and it can be demanding on resources, but that should never deter us from ensuring we are doing everything we can to protect victims.

"Tackling modern slavery in our communities is something that we place a lot of emphasis on.

Fundamentally, it is about protecting the most vulnerable in society and we've made it one of our top priorities where we will be focusing our resources.

"A steady flow of information from the public is vital in the fight against Modern Slavery and we are making positive strides in this area too. We are raising awareness of this issue both internally with officers and staff and externally, within our communities. They are the eyes and ears that provide the local intelligence needed to help us continue to target businesses and individuals that traffic and exploit vulnerable people.

"Combining our day-to-day frontline resources with specialists is also a critical component of our approach. Our dedicated Human Exploitation and Emerging Threats (HEET) team is central to us tackling this type of crime. They gather and analyse information to help us better understand where the specific threats exist in our communities. They then use that to set in motion operations (both locally and with our partners in the Regional Organised Crime Unit) that disrupt and dismantle criminal exploitation of vulnerable people.

"Over the course of the last year, we have carried out operations in a number of areas all related to modern slavery and human trafficking. These have included tackling and closing down 'pop up' brothels in Swindon and identifying labour exploitation in nail bars and car washes across the county. Modern slavery is complex and manifests itself in a number of ways. We will continue to focus our activity on the issues that have the greatest impact on our communities.

"Let me be clear, we will not tolerate any form of exploitation and we want victims to feel confident in reporting to us, safe in the knowledge that we will support them alongside our partners.

"Of course, modern slavery is not just an issue for the police. There are so many other areas that it impacts, from public health to housing to child protection. We work closely with our partners as part of the Swindon and Wiltshire Anti-Slavery Partnership (which is chaired by Wiltshire Police) to ensure that collectively we are working together to tackle these issues and put plans in place to provide support to victims.

"The welfare of victims is paramount and should always remain our priority. Modern slavery and human trafficking are abhorrent crimes and community based intelligence is crucial in investigations of this nature. Working together we can put a stop to the exploitation of the vulnerable. Call 101, or Crimestoppers on 0800 555 111 where information can be left anonymously. You can also contact the Modern Slavery helpline confidentially at any time, day or night on 08000 121 700".

Police and Crime Commissioner for Wiltshire and Swindon Angus Macpherson said: "Protecting the most vulnerable in society is one of the four priorities of my Police and Crime Plan and I welcome this report from HMICFRS into what is a serious, complex and challenging issue for police forces and partners across the country.

"Modern Slavery is not just a 'big city issue'. Wiltshire is a safe place to live but that doesn't mean it is immune to issues like modern slavery.

"The Chief Constable and his team must continue to 'lift the stone' on this toxic crime in our communities. I want to see offenders brought to justice wherever possible though close cooperation with our partners."

Domestic Abuse

A third of DA perpetrators are repeat offenders. A quarter of offenders have also been the victim of DA.

James Williams
Sector Inspector,
Wiltshire East CPT